

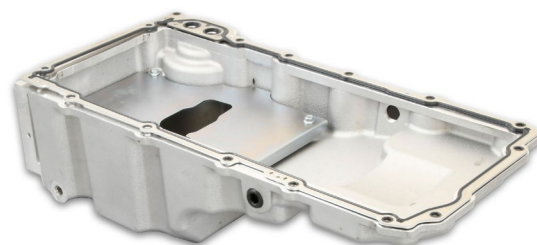
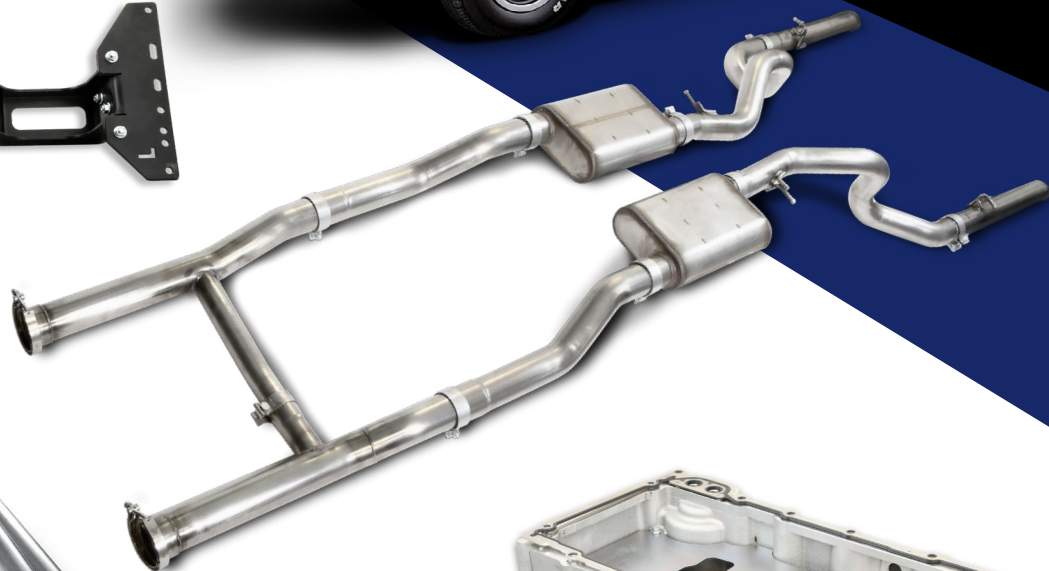


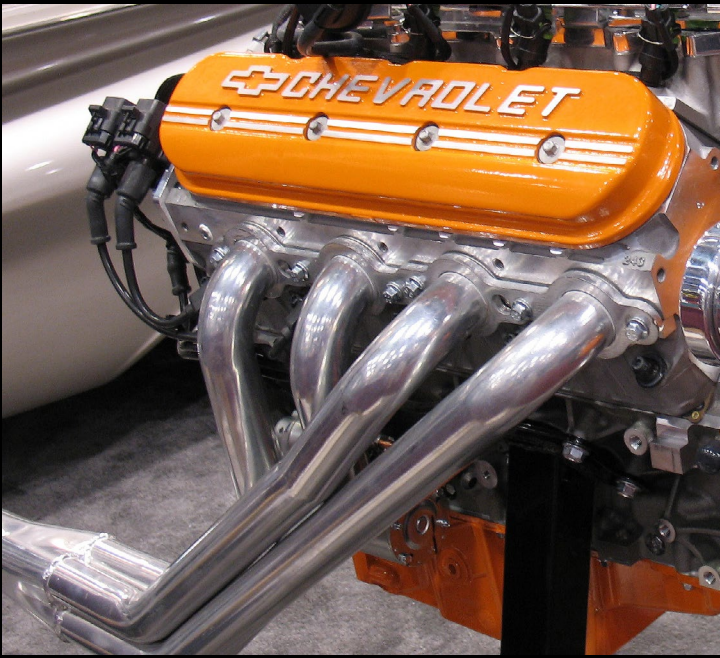
LS ENGINE SWAP PRODUCTS

*1963-72
Chevy/GMC C10*

*1970-81 Camaro/
Firebird*

1964-67 Chevelle





Your engine is the heart of your vehicle, giving it its pulse. As much as you love driving your classic car with its signature sound and smell wafting from under those hood scoops just begging to be filled up on gas – there may come a time when this can't satisfy our desire for more power and reliability.

Enter the Doug's Headers Line of LS Engine Swap products.

We have developed a line of products that work together to ensure a proper fit for the LS Engine into specific applications. Our team understands that engine swap projects often take place over time and careful consideration goes into choosing the right products to suit a range of budgets. That's why we're offering our LS engine swap parts a la carte so you can buy each part as needed instead of all at once.

You don't need to spend thousands of dollars on parts you won't use! Whether you're looking for headers, exhaust, oil pans, motor mounts, or transmission crossmembers - we've got everything you'll need in one place at prices that will keep your wallet happy. Don't wait any longer; let's get started.

These pages outline the individual parts that work together (or separate) to bring your LS Engine Swap to life.

Doug's Header LS Engine Swap Product Line:

TRANSMISSION CROSSMEMBERS AND MOTOR MOUNTS

• For each application, Doug's offers a CAD-CAM designed, welded steel, Transmission Crossmembers and Motor Mounts kits with a durable Black Powder Coat finish complete with all the necessary hardware and detailed instructions

DOUG'S LOW PROFILE OIL PAN

• OEM Quality Cast Oil Pan fits all applications. Designed for more crossmember clearance. Complete with Pick Up, Gasket, and Hardware.

DOUG'S HEADERS AND EXHAUST

• For Each application, Doug's offers 4 into 1 Headers in Sliver Ceramic or Hi Temp Black Coating and a complete 304 Stainless Exhaust System to help your new LS Engine breath.

Important Ordering Information:

- #1: Choose your Application by Make, Model & Year
- #2: Pick the Motor Mount kit and Transmission Crossmember that fits your engine & trans combination
- #3: Get the Oil Pan that fits your swap
- #4: Choose the Headers that best suit your conversion
- #5: Add the Doug's 304SS Exhaust system to complete the swap



**1963-1972 Chevy
C10**



**1964-1967 GM A Body
(Chevelle)**



**1970-1981 GM F Body
(Camaro/Firebird)**



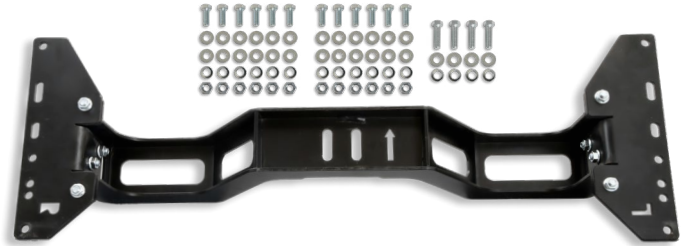
LS ENGINE SWAP PRODUCTS



1963-72 Chevy/GMC C10

TRANSMISSION CROSSMEMBER

- For 2WD trucks with GM LS & LT Engines
- CAD-CAM designed, Welded Steel with Durable Black Powder Coat finish for proper fit, strength, and appearance
- Complete with necessary hardware and detailed instructions
- One part number fits with ALL popular late model Manual & Automatic transmission swaps
- Designed to clear up to 3" exhaust systems with no loss of ground clearance
- For use with Doug's Motor Mount brackets, Oil Pans, Headers, and Exhaust systems



SKC102

6 PERTRONIX PERFORMANCE BRANDS EMISSIONS CODES
 This Product is Certified by the Manufacturer as being a Non-Emissions Related part per CARB and EPA regulations and therefore does not require emissions certification or CARB EO and is legal in all 50 states.
REV 9/2022

MOTOR MOUNTS

- Fits 2WD trucks with GM LS & LT Engines, and "Narrow" frame rails
- CAD-CAM designed, Welded Steel with Durable Black Powder Coat finish for proper fit, strength, and appearance
- Complete with necessary hardware and detailed instructions
- Uses 4th Gen Camaro style motor mount isolators
- For use with Doug's Transmission Mounts, Oil Pans, Headers, And Exhaust Systems



Late 1967-72
 Narrow Frame
 SK102

6 PERTRONIX PERFORMANCE BRANDS EMISSIONS CODES
 This Product is Certified by the Manufacturer as being a Non-Emissions Related part per CARB and EPA regulations and therefore does not require emissions certification or CARB EO and is legal in all 50 states.
REV 9/2022

HEADERS

- Mandrel Bent 1 7/8" diameter primaries with 3" collectors
- Fits all GM LS engines, includes bungs for O2 sensors
- Designed for use with Doug's Headers LS swap mounts and exhaust systems
- 3/8" Flanges and V-Band Clamps for a leak proof seal
- Available in Silver Metallic Ceramic Coating or Doug's High Temp Black coating for strong corrosion resistance and heat retention



D3348
 D3348-B

3 PERTRONIX PERFORMANCE BRANDS EMISSIONS CODES
 This Product is LEGAL for Closed Course Competition use or Pre-Emissions Controlled Vehicles ONLY. It is Not Legal for use on any Emissions Controlled Vehicle for Street or Off Highway use.
REV 9/2022

OIL PAN

- OEM Quality Cast Aluminum oil pan
- Complete with oil pickup tube, gasket, and all hardware
- Oil drain back ports for Turbo applications
- Fits with up to 4" stroker cranks



SKOP100

6 PERTRONIX PERFORMANCE BRANDS EMISSIONS CODES
 This Product is Certified by the Manufacturer as being a Non-Emissions Related part per CARB and EPA regulations and therefore does not require emissions certification or CARB EO and is legal in all 50 states.
REV 9/2022

EXHAUST SYSTEM

- Mandrel Bent 304 Stainless for maximum flow and long, lasting durability
- Compatible with Doug's LS Swap headers
- Complete with all brackets and hardware for a true Bolt On installation
- Doug's stainless muffler and H-Pipe design for a true Muscle Truck sound
- Fits 63-72 Short Bed "Truck Arm", coil spring suspension
- Tucks up tight with the Doug's Transmission Crossmember for maximum ground clearance



DES102

6 PERTRONIX PERFORMANCE BRANDS EMISSIONS CODES
 This Product is Certified by the Manufacturer as being a Non-Emissions Related part per CARB and EPA regulations and therefore does not require emissions certification or CARB EO and is legal in all 50 states.
REV 9/2022



LS ENGINE SWAP PRODUCTS

1964-67
Chevelle



TRANSMISSION CROSSMEMBER

- CAD-CAM designed, Welded Steel with Durable Black Powder Coat finish for proper fit, strength, and appearance
- One part number fits with ALL popular late model Manual & Automatic transmission swaps
- Designed to clear up to 3" exhaust systems with no loss of ground clearance
- Complete with necessary hardware and detailed instructions
- For use with Doug's Motor Mount brackets, Oil Pans, Headers, and Exhaust systems



[SKC101](#)



6 PERTRONIX PERFORMANCE BRANDS EMISSIONS CODES
This Product is Certified by the Manufacturer as being a Non-Emissions Related part per CARB and EPA regulations and therefore does not require emissions certification or CARB EO and is legal in all 50 states.
REV 9/2022

MOTOR MOUNTS

- CAD-CAM designed, Welded Steel with Durable Black Powder Coat finish for proper fit, strength, and appearance
- Complete with necessary hardware and detailed instructions
- Uses 4th Gen Camaro OE style motor mount isolators
- For use with Doug's Transmission Mounts, Oil Pans, Headers, and Exhaust Systems



[SK103](#)

6 PERTRONIX PERFORMANCE BRANDS EMISSIONS CODES
This Product is Certified by the Manufacturer as being a Non-Emissions Related part per CARB and EPA regulations and therefore does not require emissions certification or CARB EO and is legal in all 50 states.
REV 9/2022

OIL PAN

- OEM Quality Cast Aluminum oil pan
- Complete with oil pickup tube, gasket, and all hardware
- Oil drain back ports for Turbo applications
- Fits with up to 4" stroker cranks



[SKOP100](#)

6 PERTRONIX PERFORMANCE BRANDS EMISSIONS CODES
This Product is Certified by the Manufacturer as being a Non-Emissions Related part per CARB and EPA regulations and therefore does not require emissions certification or CARB EO and is legal in all 50 states.
REV 9/2022

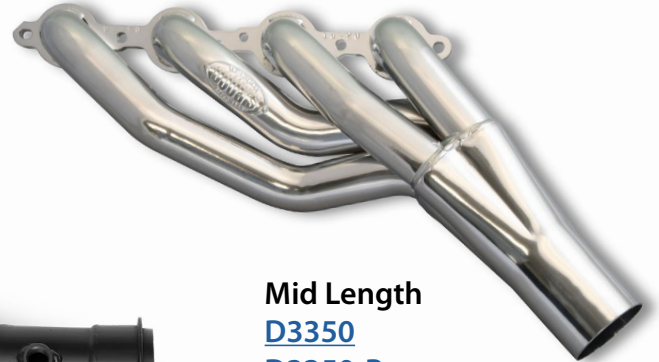
HEADERS

- Mandrel Bent 1 7/8" diameter primaries with 3" collectors
- Fits all GM LS engines, includes bungs for O2 sensors
- Designed for use with Doug's Headers LS swap mounts and exhaust systems
- 3/8" Flanges and V-Band Clamps for a leak proof seal
- Available in Silver Metallic Ceramic Coating or Doug's High Temp Black coating for strong corrosion resistance and heat retention

2 **PERTRONIX PERFORMANCE BRANDS EMISSIONS CODES**
 This product is Legal for use on Pre-Pollution Controlled Vehicles. It is legal for use on all vehicles produced Before Emissions Control Regulations were imposed. These are considered Uncontrolled Vehicles and are defined as follows;
 1965 and Older US Manufactured California Certified Vehicles
 1967 and Older US Manufactured Federally Certified Vehicles
 1967 and Older Foreign Manufactured Vehicles
REV 3/2022



Long Tube
[D3349](#)
[D3349-B](#)



Mid Length
[D3350](#)
[D3350-B](#)

MID LENGTH EXHAUST ADAPTOR

- Connects Doug's Mid Length D3350 Headers to DES 103 Exhaust system
- Mandrel Bent 3" diameter tubes
- V-Band Connection to Headers
- Slip Connection to Doug's Exhaust System
- O2 Sensor ports welded in tube



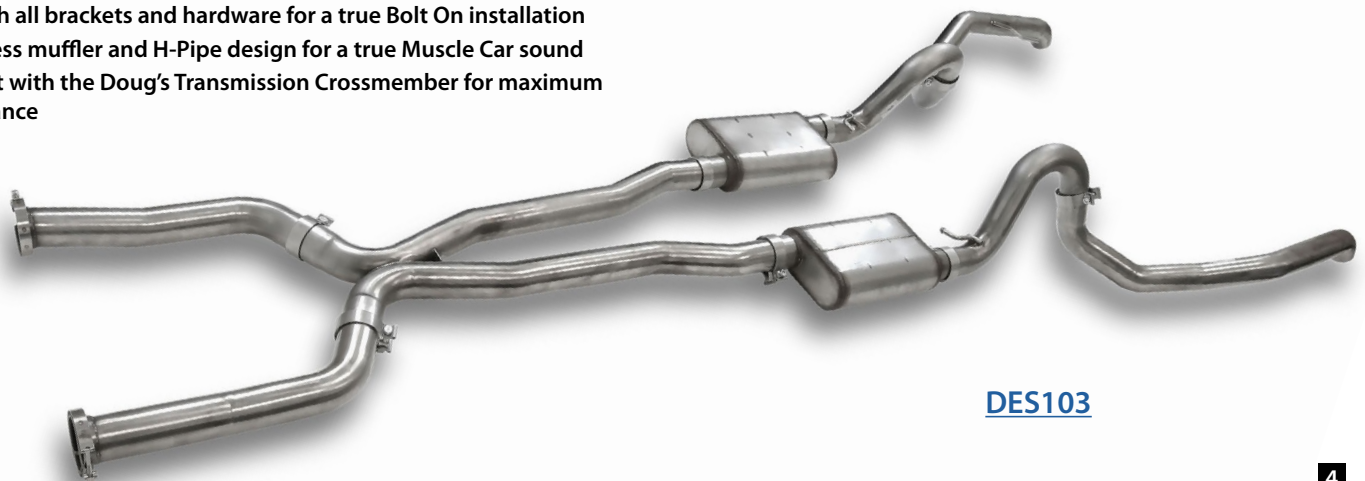
[DMP103](#)

2 **PERTRONIX PERFORMANCE BRANDS EMISSIONS CODES**
 This product is Legal for use on Pre-Pollution Controlled Vehicles. It is legal for use on all vehicles produced Before Emissions Control Regulations were imposed. These are considered Uncontrolled Vehicles and are defined as follows;
 1965 and Older US Manufactured California Certified Vehicles
 1967 and Older US Manufactured Federally Certified Vehicles
 1967 and Older Foreign Manufactured Vehicles
REV 3/2022

EXHAUST SYSTEM

- Mandrel Bent 304 Stainless for maximum flow and long, lasting durability
- Compatible with Doug's LS Swap headers
- Complete with all brackets and hardware for a true Bolt On installation
- Doug's stainless muffler and H-Pipe design for a true Muscle Car sound
- Tucks up tight with the Doug's Transmission Crossmember for maximum ground clearance

6 **PERTRONIX PERFORMANCE BRANDS EMISSIONS CODES**
 This Product is Certified by the Manufacturer as being a Non-Emissions Related part per CARB and EPA regulations and therefore does not require emissions certification or CARB EO and is legal in all 50 states.
REV 3/2022



[DES103](#)



LS ENGINE SWAP PRODUCTS

1970-81 Camaro/Firebird



TRANSMISSION CROSSMEMBER

- CAD-CAM designed, Welded Steel with Durable Black Powder Coat finish for proper fit, strength, and appearance
- One part number fits with ALL popular late model Manual & Automatic transmission swaps
- Designed to clear up to 3" exhaust systems with no loss of ground clearance
- Complete with necessary hardware and detailed instructions
- For use with Doug's Motor Mount brackets, Oil Pans, Headers, and Exhaust systems



[SKC104](#)

6 **PERTRONIX PERFORMANCE BRANDS EMISSIONS CODES**
 This Product is Certified by the Manufacturer as being a Non-Emissions Related part per CARB and EPA regulations and therefore does not require emissions certification or CARB EO and is legal in all 50 states.
REV 9/2022

MOTOR MOUNTS

- CAD-CAM designed, Welded Steel with Durable Black Powder Coat finish for proper fit, strength, and appearance
- Complete with necessary hardware and detailed instructions
- Uses Original GM Clam Shell style motor mount isolators
- For use with Doug's Transmission Mounts, Oil Pans, Headers, And Exhaust Systems



1970-74
[SK104](#)

1975-81
[SK105](#)

6 **PERTRONIX PERFORMANCE BRANDS EMISSIONS CODES**
 This Product is Certified by the Manufacturer as being a Non-Emissions Related part per CARB and EPA regulations and therefore does not require emissions certification or CARB EO and is legal in all 50 states.
REV 9/2022

OIL PAN

- OEM Quality Cast Aluminum oil pan
- Complete with oil pickup tube, gasket, and all hardware
- Oil drain back ports for Turbo applications
- Fits with up to 4" stroker cranks



[SKOP100](#)

5 **6** **PERTRONIX PERFORMANCE BRANDS EMISSIONS CODES**
 This Product is Certified by the Manufacturer as being a Non-Emissions Related part per CARB and EPA regulations and therefore does not require emissions certification or CARB EO and is legal in all 50 states.
REV 9/2022

HEADERS

- Mandrel Bent 1 7/8" diameter primaries with 3" collectors
- Fits all GM LS engines, includes bungs for O2 sensors
- Designed for use with Doug's Headers LS swap mounts and exhaust systems
- 3/8" Flanges
- Available in Silver Metallic Ceramic Coating or Doug's High Temp Black coating for strong corrosion and heat retention

3 PERTRONIX PERFORMANCE BRANDS EMISSIONS CODES
This Product is LEGAL for Closed Course Competition use or Pre-Emissions Controlled Vehicles ONLY. It is Not Legal for use on any Emissions Controlled Vehicle for Street or Off Highway use.
REV 3/2012



Long Tube, 1970-74
[D3352](#)
[D3352-B](#)



Long Tube, 1975-81
[D3351](#)
[D3351-B](#)



Mid Length, 1970-81
[D3358](#)
[D3358-B](#)

MID LENGTH EXHAUST ADAPTOR

- Connects Doug's Mid Length D3358 Headers to DES 104 /DES 105 Exhaust system
- Mandrel Bent 3" diameter tubes
- V-Band Connection to Headers
- Slip Connection to Doug's Exhaust System
- O2 Sensor ports welded in tube

3 PERTRONIX PERFORMANCE BRANDS EMISSIONS CODES
This Product is LEGAL for Closed Course Competition use or Pre-Emissions Controlled Vehicles ONLY. It is Not Legal for use on any Emissions Controlled Vehicle for Street or Off Highway use.
REV 3/2012



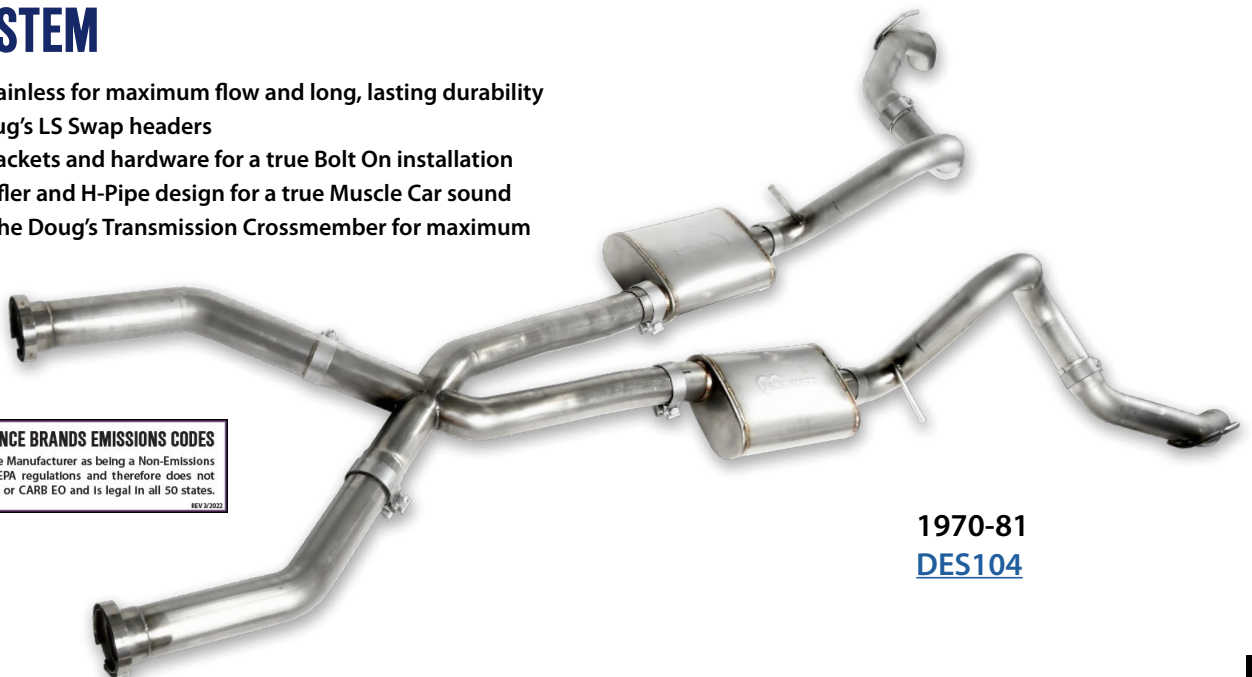
[DMP104](#)

[DMP105](#)

EXHAUST SYSTEM

- Mandrel Bent 304 Stainless for maximum flow and long, lasting durability
- Compatible with Doug's LS Swap headers
- Complete with all brackets and hardware for a true Bolt On installation
- Doug's stainless muffler and H-Pipe design for a true Muscle Car sound
- Tucks up tight with the Doug's Transmission Crossmember for maximum ground clearance

6 PERTRONIX PERFORMANCE BRANDS EMISSIONS CODES
This Product is Certified by the Manufacturer as being a Non-Emissions Related part per CARB and EPA regulations and therefore does not require emissions certification or CARB EO and is legal in all 50 states.
REV 3/2012



1970-81
[DES104](#)

LS ENGINE SWAP PRODUCTS



This product can expose you to chemicals such as lead which is known to the State of California to cause cancer and birth defects or other reproductive harm. For more information go to: www.P65Warnings.ca.gov/product

Rev. 9/22



Follow Us

www.pertronixbrands.com

909-599-5955

440 E Arrow Hwy • San Dimas, CA 91773