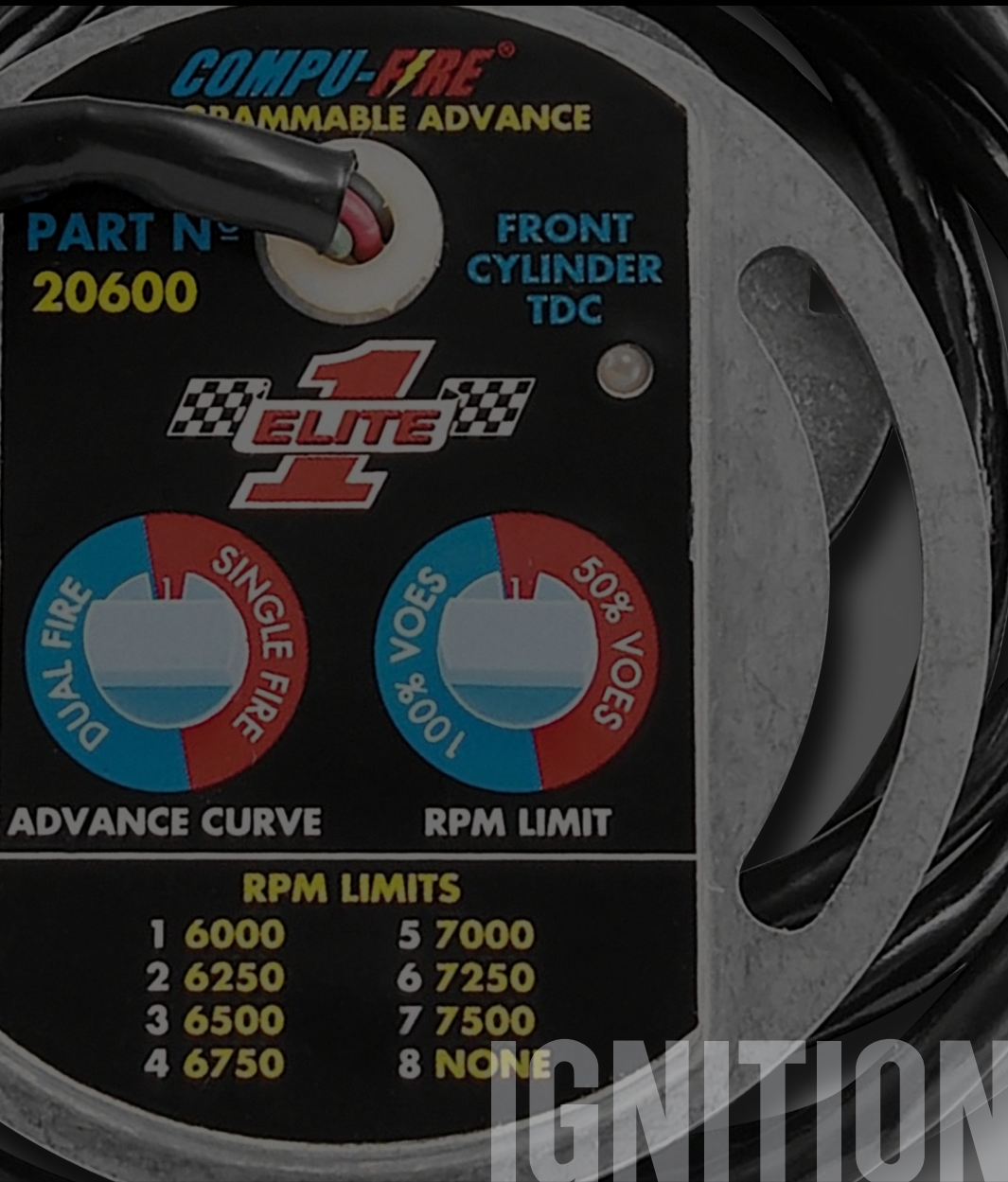


COMPU-FIRE[®]

VW & MOTORCYCLE PRODUCTS

The Leader in Volkswagen, V-Twin and Goldwing Ignition Systems, Charging Systems and Starters.



COMPU-FIRE[®]
PROGRAMMABLE ADVANCE

PART NUMBER
20600

FRONT CYLINDER
TDC

1 ELITE

DUAL FIRE / SINGLE FIRE
100% VOES / 50% VOES

ADVANCE CURVE RPM LIMIT

RPM LIMITS	
1 6000	5 7000
2 6250	6 7250
3 6500	7 7500
4 6750	8 NONE

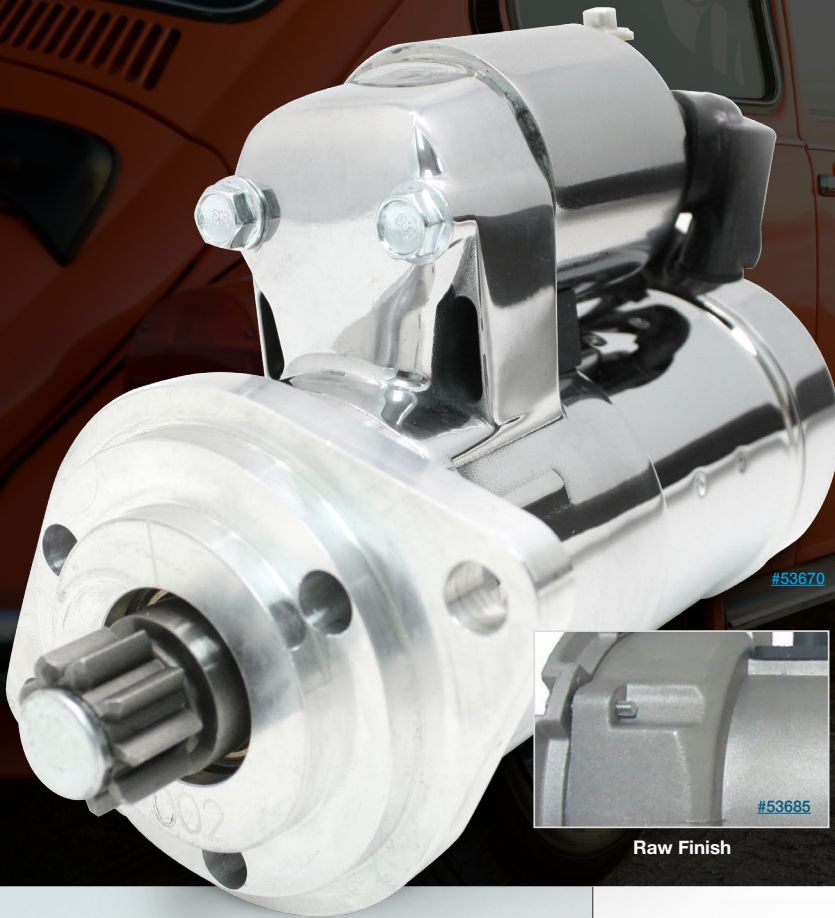
IGNITION



CHARGING



STARTERS



#53670

#53685

Raw Finish

GEN-3 VOLKSWAGEN
STARTERS

The Gen-3 Permanent Magnet Gear Reduction (PMGR) Starter Motor is for all air-cooled Volkswagen Bug and Bus applications. The new starter produces 2kw of starting energy by using modern permanent magnet field technology along with a precision wound high amperage armature. The gear reduction has a lower ratio (6:1) to allow easy starts for all large displacement high compression performance engines. The new Compu-Fire starter motor is assembled in the USA with 100% all new components. The starter case has a shiny show car appearance with a high luster polished finish. All Compu-Fire products are backed by a 12 month limited warranty.

VW Bus & Bug Starters

Part #	Finish	Description
53670	Polished	Type I Bug w/ 002 Trans & 1967-75 Type 2 Bus
53675	Raw	Type I Bug w/ 002 Trans & 1967-75 Type 2 Bus
53680	Polished	1976-92 Type II Bus w/ 091 Trans
53685	Raw	1976-92 Type II Bus w/ 091 Trans
90003	Polished	Replacement Solenoid for Gen-3 Starters

Volkswagen Bugs and Buses are revered in automotive history. With their distinctive aesthetic, they have become a part of pop-culture world-wide. But they may not be the most reliable vehicle on the planet. Compu-Fire VW products are designed for reliability and longevity to keep your beloved VW healthy for years to come.

Alternators

90 Amp Alternator for Air Cooled Bug & Bus

Part #	Finish
58690P	Polish
58690	Raw



#58690P

#58690

Compu-Fire's VW 90 AMP alternator allows the use of high current draw electrical accessories including high output sound systems, engine management systems, and off-road lighting and is a direct bolt-on replacement for air cooled Volkswagens. Internally regulated for excellent output at idle.

Raw Finish





DIS-IX VOLKSWAGEN DISTRIBUTORLESS

Compu-Fire DIS-IX Distributorless Ignition Systems for your Bosch 009 distributor provide triple the energy of traditional electronic ignition systems. You'll realize the benefits of the maintenance-free, instant starting setup in these bolt-on, plug-and-play systems. The distribution and the switching functions have been eliminated, but you still have need for the timing function, and the body of a Bosch 009 contains a robust centrifugal-advance mechanism that fulfills that role in a practical, inexpensive, and reliable manner.

DIS-IX Systems include:

- Custom high-energy 60,000 V coil pack
- Silicone spark plug wires
- All electronics, wiring, and connectors
- Mounting hardware

VW Bus & Bug Distributorless Ignition System

For BOSCH 009 Distributor

Part #	Wires	Description
11100-B	Blue	DIS-IX Distributorless Ignition System
11100-Y	Yellow	DIS-IX Distributorless Ignition System



Ignition Module

Replaces Contact Breaker Points

Part #	Description
21100	BOSCH 009 and 050 Dist
21101	BOSCH Vacuum Adv Dist



Electronic Module

For DIS-IX Distributorless System

Part #	Description
22511	Module w/ Rotor



Ignition Rotor

Part #	Description
50108	Replacement Rotor for Compu-Fire Electronic Advance Kits
51102	Trigger Rotor for DIS-IX
51103	Trigger Rotor for VW-1 & VW-2



Spark Plug Wires

For DIS-IX Ignition Systems

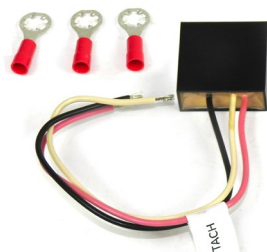
Part #	Description
41100-Y	Yellow Wires
41100-B	Blue Wires



Extension Cable

For DIS-IX Ignition Systems

Part #	Description
41101	20" Extension Cable



Tachometer Adapter

Part #	Description
51105	Single Fire Coils
51105-V	DIS-IX Ignition System



Canister Coil

For Points or Electronic Ignitions

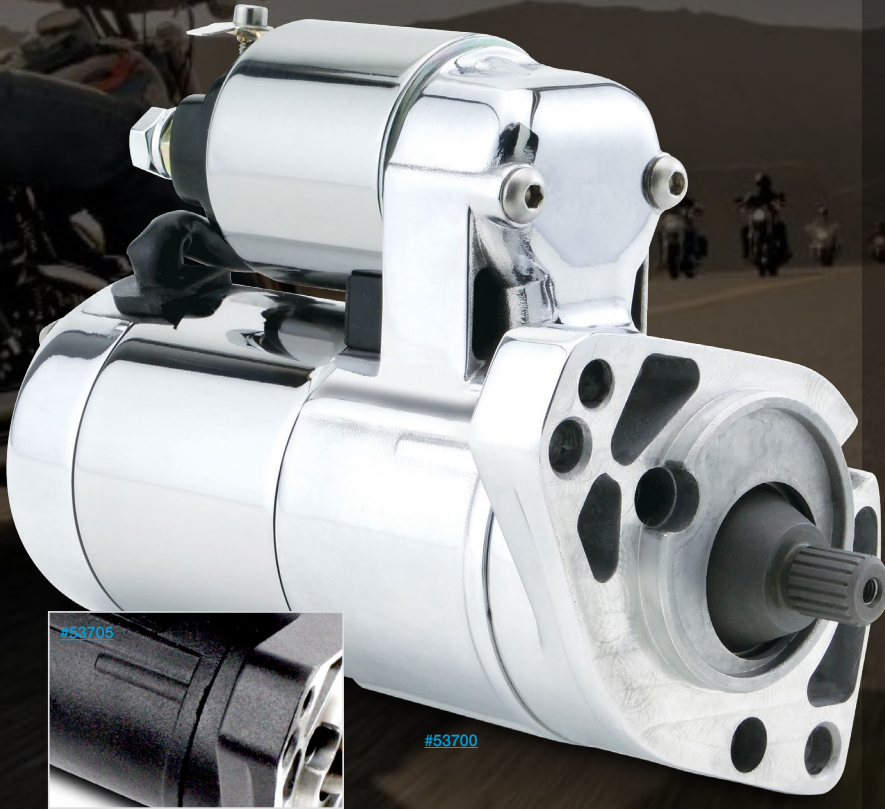
Part #	Description
30350	Chrome 40,000 Volt



DIS-IX Coil

For DIS-IX Distributorless Systems

Part #	Description
30320	Black 60,000 Volt



Black Finish

GEN-3 HARLEY-DAVIDSON STARTERS

The Compu-Fire Gen-3 starters are the only starters in the V-Twin Motorcycle industry that are engineered for cranking the large displacement, high compression engines without the need for compression releases on most engines. Engines running over 113 Cubic Inches should continue to use compression releases on ALL starters. The Gen-3 Starter produces more cranking power than 2kW starters with half the current draw.

The high energy neodymium magnets, high efficiency motor windings, and 6:1 planetary gear reduction are unique to this starter. The splined output shaft, stepped jackshaft bolt, and shortened case design allow just one part number to cover all Big Twins from 1990 to present!

Part #	Description	Year/Model
53700 53705	Chrome Black	1990-2006 Big Twin *Except 06 Dyna
53883 53886	Chrome Black	1981-2018 Sportster and 1994-2008 Buell, *Except 1125R
53900 53905	High Speed, Chrome High Speed, Black	1990-2006 Big Twin *Except 06 Dyna



EZ Fit Starter

1965-88 Big Twin

Part #	Finish
53730	Chrome
53735	Black



1.6 kW Starter

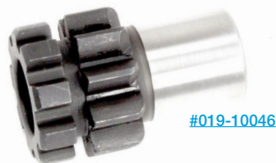
2006-17 Dyna and 2007-17 Twin Cam

Part #	Finish
53800	Chrome
53810	Black



Gear Sets

Part #	Description	Year/Model
54001	10/84 Gear Set	1990-93 Big Twin
54002	10/84 Gear Set 8620 Hardened Steel	1994-97 Big Twin
54003	10/84 Gear Set 8620 Hardened Steel	1998-06 Big Twin *Except 06 Dyna



Replacement Pinion Gears

Part #	Description
019-10045	10 Tooth Replacement Pinion Gear for 54002 and 54003 Gear Sets
019-10046	10 Tooth Replacement Pinion Gear for the 54001 Gear Set



3" BDL Adapter Shaft

Part #	Description
53507	Adapter Shaft for use with 3" BDL Belt Drive



SELECTABLE ELECTRONIC ADVANCE

IGNITION MODULE

The Compu-fire selectable advance curve ignition modules are the most user friendly ignitions on the market. They features a broad range of advance curves to meet the needs of engines from stock to wild. The large rotary switches allow advance curve and RPM limiter selection. Easy installation is made possible with a built in LED static timing light. The modules feature extended temperature and low voltage operation with soft start circuitry for easy starting. The modules operate with a single fire or dual fire coils and the VOES is tuneable. Use with Part Number 51105 Tach Adapter for single fire coil tach signal.

Selectable Electronic Advance Ignition Module

1970-1999 Big Twin

*Excluding Fuel Injected

1971-2001 XL

*Excluding S Models

Part #	Description
20600	Mild Performance
21835	High Performance
21835-KS	High Performance with Kick Start
21860	High Performance with Retarded Timing



COMPU-FIRE
PROGRAMMABLE ADVANCE
PART N°
20600
FRONT CYLINDER
TDC
ELITE
ADVANCE CURVE
RPM LIMIT
RPM LIMITS
1 6000 5 7000
2 6250 6 7250
3 6500 7 7500
4 6750 8 NONE

#20550



Ignition Modules

1970-1999 Carbureted Big Twin

1971-2001 XL *Excluding S Models

Part #	Description
20500	Electronic Advance, Dual Fire
20550	Electronic Advance, Single Fire
20100	Mechanical Advance, Dual Fire
20200	Mechanical Advance, Single Fire



#22001

Single Fire Ignition System Kit

1970-1999 Carbureted Big Twin

1971-2001 XL *Excluding S Models

Part #	Description
22001	Kick Start Equipped
22003	Electric Start Equipped
22005	Racing Retarded Timing



#40100

Universal Spark Plug Wires

Part #	Description
40100	2-Wire Set w/ Single Plug Heads
40200	4-Wire Set V-Twin w/ Dual Plug Heads



#30650

Coil

1980-2002 Carbureted Big Twins

Part #	Description
30640	Single Fire, 50,000 Volt
30650	Dual Fire, 50,000 Volt



COMPU-FIRE'S ROBUST CHARGING SYSTEMS

The Compu-Fire 40 amp 3Phase charging systems provide 25 amps at idle and 40 amps continuously above 2800 RPM. The unique narrow rotor and stator combination fits Softail/Dyna primary cases and the voltage regulator bolts on without any fram modifications. The precision balanced vented rotor keeps the stator cooler in closed primary systems to maintain maximum output under all high current draw conditions. The large flanged seal spacer provides maximum support for the rotor and the voltage regulator output is calibrated to 14.25 volts from idle on up.

40 Amp Charging System Kits for Harley-Davidson

Part #	Type	Description
55560	40 Amp 3Phase	1881-99 Evo w/ Vented Rotor
55565	40 Amp 3Phase	2003-06 Twin Cam* w/ Vented Rotor
55566	40 Amp 3Phase	1999-02 Twin Cam w/ Vented Rotor
55570	40 Amp 3Phase	1981-99 Evo w/ Non-Vented Rotor
55575	40 Amp 3Phase	2003-06 Twin Cam* w/ Non-Vented Rotor
55576	40 Amp 3Phase	1999-02 Twin Cam w/ Non-Vented

*Except 2006 Dyna



#55560



#55520

32 Amp Charging System Kit

These 32 amp Compu-Fire charging systems include the three components necessary to keep the battery charged for carbureted Evolution and Twin Cam® engines. These systems include a custom wound stator with the correct engine case plug, a precision balanced rotor with the magnets permanently attached and splines machined to match factory or aftermarket sprocket shaft, and a black finned series type voltage regulator with the voltage output calibrated to meet maintenance free battery requirements.

- Part # [55520](#) 1981-99 Carb Evo w/ Narrow Rotor
- Part # [55522](#) 1998-03 Carb Twin Cam
- Part # [55540](#) 1981-99 EFI Evo & Big Twin



#55403

Regulators

Part #	Amps	Finish	Description
55120	32A	Black	1989-99 Big Twin
55130	32A	Chrome	1989-99 Big Twin
55121	22A	Black	1981-88 Big Twin
55125	22A	Black	1991-99 Sportster
55150	38A	Black	1998-02 Big Twin
55402	40A	Black	Compu-Fire 3Phase
55403	40A	Black	Universal 3Phase



#55404

Stators

- Part # [55404](#) 3Phase Evo
- Part # [55405](#) 3Phase Twin Cam
- Part # [55530](#) 1981-99 Evo & Big Twin



#55406

Rotors

- Part # [55406](#) 3Phase Vented Rotor
- Part # [55650](#) 3Phase Non-Vented Rotor
- Part # [55600](#) 1981-99 Evo w/ Narrow Rotor



PREMIUM GL
HONDA ALTERNATOR

Compu-Fire's 150 amp alternator is a high-output replacement for 78A (00-08 models) and 110A (09-12 models) Honda OEM alternators.

Our 90 amp alternator with 1325W of power cranks out 2.5 times the stock power for plenty of electricity to run all those accessories you need.

HONDA Alternators

Part#	Amps	Description
58200	150 Amp	1999-17 Honda GL1800
58500	90 Amp	1989-20 Honda GL1500





Compu-Fire® offers a full range of stock replacement Ignition Modules, Charging Systems, and Starters for both Volkswagen and Motorcycle applications.

We are renowned for robust performance and quality in longevity.

Find your part at: PerTronixBrands.com

BUGS BUSES & BIKES

COMPU-FIRE®

VW & MOTORCYCLE PRODUCTS

909-599-5955 | PerTronixBrands.com | 440 E. Arrow Hwy • San Dimas, CA 91773