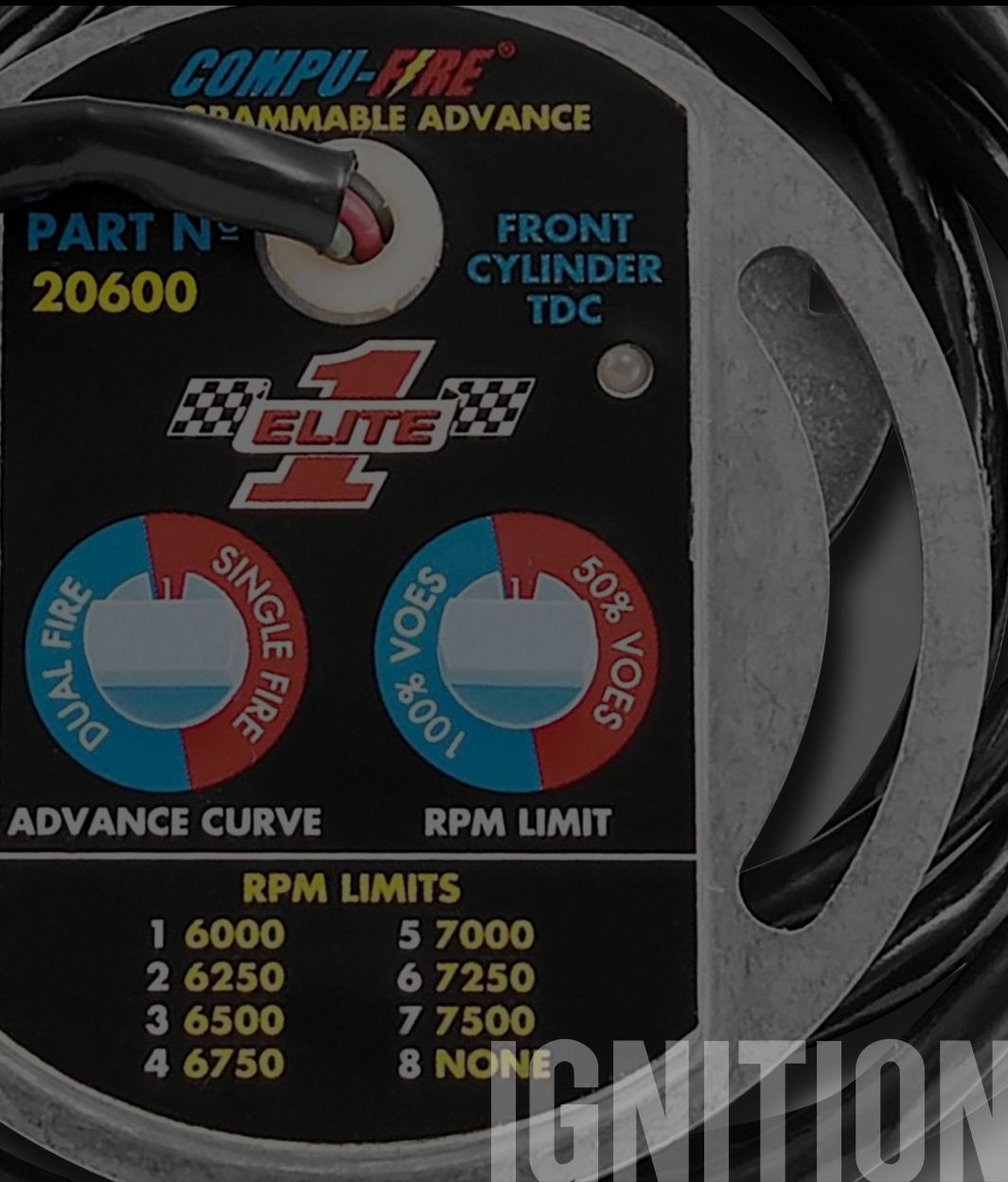


# COMPU-FIRE<sup>®</sup>

VW & MOTORCYCLE PRODUCTS

The Leader in Volkswagen, V-Twin and Goldwing Ignition Systems, Charging Systems and Starters.



**COMPU-FIRE<sup>®</sup>**  
PROGRAMMABLE ADVANCE

PART NUMBER  
**20600**

FRONT CYLINDER  
TDC

**1 ELITE**

DUAL FIRE / SINGLE FIRE  
100% VOES / 50% VOES

ADVANCE CURVE      RPM LIMIT

RPM LIMITS	
1 6000	5 7000
2 6250	6 7250
3 6500	7 7500
4 6750	8 NONE

IGNITION

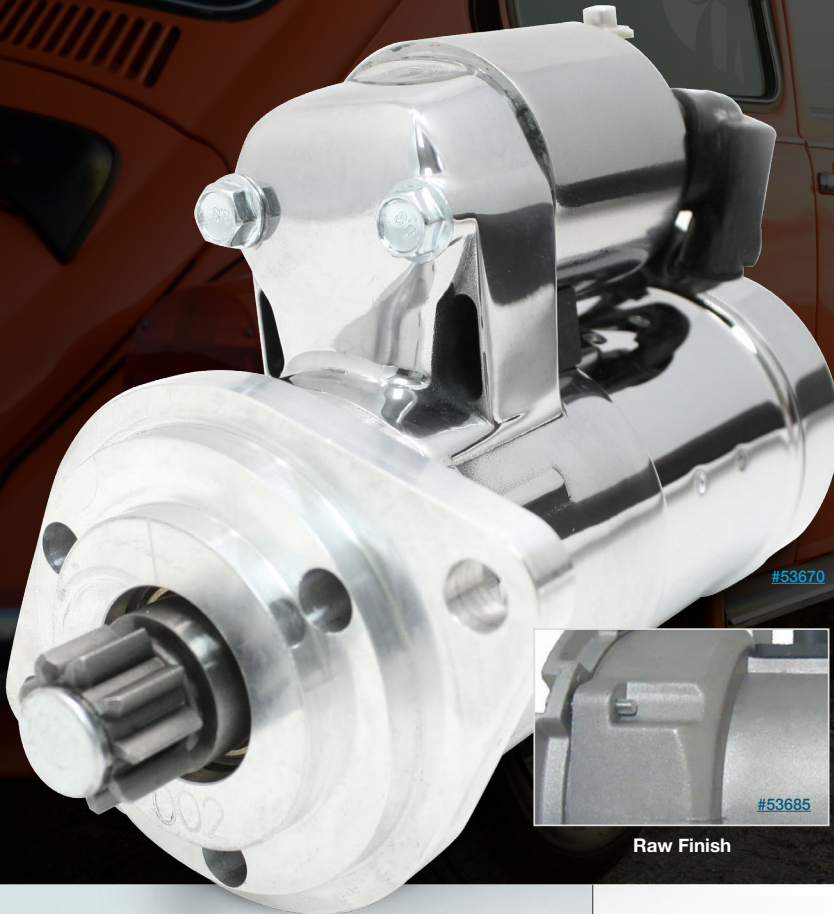


CHARGING



STARTERS





#53670



#53685

Raw Finish

**GEN-3** VOLKSWAGEN  
STARTERS

The Gen-3 Permanent Magnet Gear Reduction (PMGR) Starter Motor is for all air-cooled Volkswagen Bug and Bus applications. The new starter produces 2kw of starting energy by using modern permanent magnet field technology along with a precision wound high amperage armature. The gear reduction has a lower ratio (6:1) to allow easy starts for all large displacement high compression performance engines. The new Compu-Fire starter motor is assembled in the USA with 100% all new components. The starter case has a shiny show car appearance with a high luster polished finish. All Compu-Fire products are backed by a 12 month limited warranty.

**VW Bus & Bug Starters**

Part #	Finish	Description
<a href="#">53670</a>	Polished	Type I Bug w/ 002 Trans & 1967-75 Type 2 Bus
<a href="#">53675</a>	Raw	Type I Bug w/ 002 Trans & 1967-75 Type 2 Bus
<a href="#">53680</a>	Polished	1976-92 Type II Bus w/ 091 Trans
<a href="#">53685</a>	Raw	1976-92 Type II Bus w/ 091 Trans
<a href="#">90003</a>	Polished	Replacement Solenoid for Gen-3 Starters



Volkswagen Bugs and Buses are revered in automotive history. With their distinctive aesthetic, they have become a part of pop-culture world-wide. But they may not be the most reliable vehicle on the planet. Compu-Fire VW products are designed for reliability and longevity to keep your beloved VW healthy for years to come.

**Alternators**

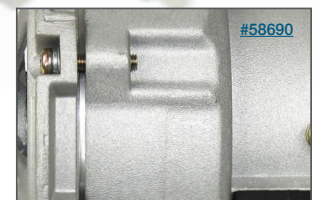
**90 Amp Alternator for Air Cooled Bug & Bus**

Part #	Finish
<a href="#">58690P</a>	Polish
<a href="#">58690</a>	Raw



#58690P

Compu-Fire's VW 90 AMP alternator allows the use of high current draw electrical accessories including high output sound systems, engine management systems, and off-road lighting and is a direct bolt-on replacement for air cooled Volkswagens. Internally regulated for excellent output at idle.



#58690

Raw Finish





## DIS-IX VOLKSWAGEN DISTRIBUTORLESS

Compu-Fire DIS-IX Distributorless Ignition Systems for your Bosch 009 distributor provide triple the energy of traditional electronic ignition systems. You'll realize the benefits of the maintenance-free, instant starting setup in these bolt-on, plug-and-play systems. The distribution and the switching functions have been eliminated, but you still have need for the timing function, and the body of a Bosch 009 contains a robust centrifugal-advance mechanism that fulfills that role in a practical, inexpensive, and reliable manner.

### DIS-IX Systems include:

- Custom high-energy 60,000 V coil pack
- Silicone spark plug wires
- All electronics, wiring, and connectors
- Mounting hardware

### VW Bus & Bug Distributorless Ignition System

For BOSCH 009 Distributor

Part #	Wires	Description
<a href="#">11100-B</a>	Blue	DIS-IX Distributorless Ignition System
<a href="#">11100-Y</a>	Yellow	DIS-IX Distributorless Ignition System



### Ignition Module

Replaces Contact Breaker Points

Part #	Description
<a href="#">21100</a>	BOSCH 009 and 050 Dist
<a href="#">21101</a>	BOSCH Vacuum Adv Dist



### Electronic Module

For DIS-IX Distributorless System

Part #	Description
<a href="#">22511</a>	Module w/ Rotor



### Ignition Rotor

Part #	Description
<a href="#">50108</a>	Replacement Rotor for Compu-Fire Electronic Advance Kits
<a href="#">51102</a>	Trigger Rotor for DIS-IX
<a href="#">51103</a>	Trigger Rotor for VW-1 & VW-2



### Spark Plug Wires

For DIS-IX Ignition Systems

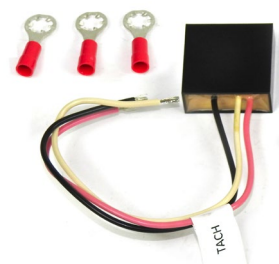
Part #	Description
<a href="#">41100-Y</a>	Yellow Wires
<a href="#">41100-B</a>	Blue Wires



### Extension Cable

For DIS-IX Ignition Systems

Part #	Description
<a href="#">41101</a>	20" Extension Cable



### Tachometer Adapter

Part #	Description
<a href="#">51105</a>	Single Fire Coils
<a href="#">51105-V</a>	DIS-IX Ignition System



### Canister Coil

For Points or Electronic Ignitions

Part #	Description
<a href="#">30350</a>	Chrome 40,000 Volt

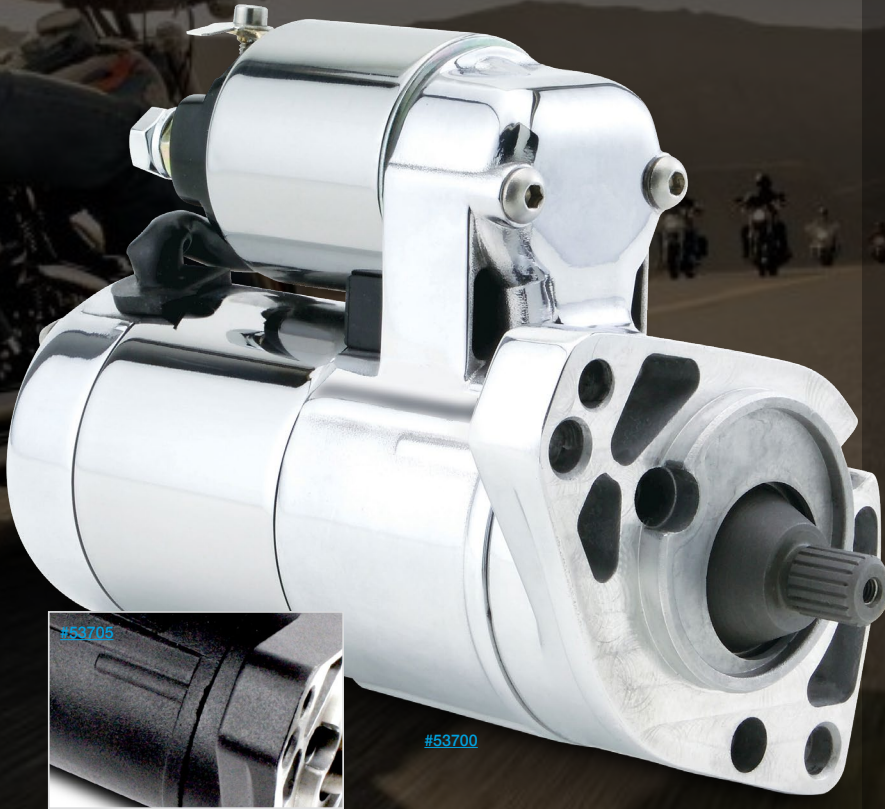


### DIS-IX Coil

For DIS-IX Distributorless Systems

Part #	Description
<a href="#">30320</a>	Black 60,000 Volt





Black Finish

## GEN-3 HARLEY-DAVIDSON STARTERS

The Compu-Fire Gen-3 starters are the only starters in the V-Twin Motorcycle industry that are engineered for cranking the large displacement, high compression engines without the need for compression releases on most engines. Engines running over 113 Cubic Inches should continue to use compression releases on ALL starters. The Gen-3 Starter produces more cranking power than 2kW starters with half the current draw.

The high energy neodymium magnets, high efficiency motor windings, and 6:1 planetary gear reduction are unique to this starter. The splined output shaft, stepped jackshaft bolt, and shortened case design allow just one part number to cover all Big Twins from 1990 to present!

Part #	Description	Year/Model
<a href="#">53700</a> <a href="#">53705</a>	Chrome Black	1990-2006 Big Twin *Except 06 Dyna
<a href="#">53883</a> <a href="#">53886</a>	Chrome Black	1981-2018 Sportster and 1994-2008 Buell, *Except 1125R
<a href="#">53900</a> <a href="#">53905</a>	High Speed, Chrome High Speed, Black	1990-2006 Big Twin *Except 06 Dyna



### EZ Fit Starter

1965-88 Big Twin

Part #	Finish
<a href="#">53730</a>	Chrome
<a href="#">53735</a>	Black



### 1.6 kW Starter

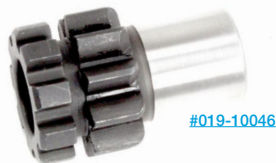
2006-17 Dyna and 2007-17 Twin Cam

Part #	Finish
<a href="#">53800</a>	Chrome
<a href="#">53810</a>	Black



### Gear Sets

Part #	Description	Year/Model
<a href="#">54001</a>	10/84 Gear Set	1990-93 Big Twin
<a href="#">54002</a>	10/84 Gear Set 8620 Hardened Steel	1994-97 Big Twin
<a href="#">54003</a>	10/84 Gear Set 8620 Hardened Steel	1998-06 Big Twin *Except 06 Dyna



### Replacement Pinion Gears

Part #	Description
<a href="#">019-10045</a>	10 Tooth Replacement Pinion Gear for 54002 and 54003 Gear Sets
<a href="#">019-10046</a>	10 Tooth Replacement Pinion Gear for the 54001 Gear Set



### 3" BDL Adapter Shaft

Part #	Description
<a href="#">53507</a>	Adapter Shaft for use with 3" BDL Belt Drive





SELECTABLE ELECTRONIC ADVANCE

## IGNITION MODULE

The Compu-fire selectable advance curve ignition modules are the most user friendly ignitions on the market. They features a broad range of advance curves to meet the needs of engines from stock to wild. The large rotary switches allow advance curve and RPM limiter selection. Easy installation is made possible with a built in LED static timing light. The modules feature extended temperature and low voltage operation with soft start circuitry for easy starting. The modules operate with a single fire or dual fire coils and the VOES is tuneable. Use with Part Number 51105 Tach Adapter for single fire coil tach signal.

### Selectable Electronic Advance Ignition Module

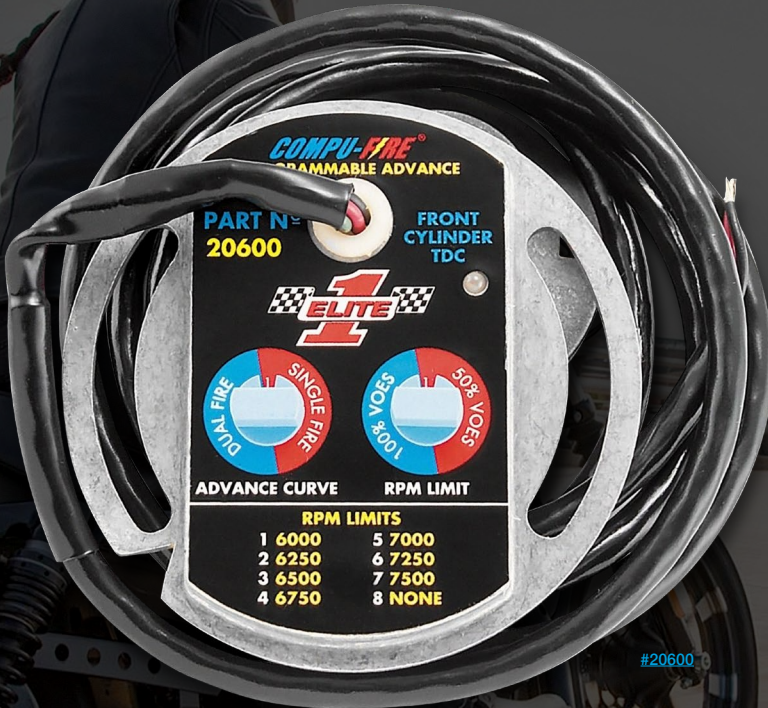
**1970-1999 Big Twin**

\*Excluding Fuel Injected

**1971-2001 XL**

\*Excluding S Models

Part #	Description
<a href="#">20600</a>	Mild Performance
<a href="#">21835</a>	High Performance
<a href="#">21835-KS</a>	High Performance with Kick Start
<a href="#">21860</a>	High Performance with Retarded Timing



### Ignition Modules

1970-1999 Carbureted Big Twin

1971-2001 XL \*Excluding S Models

Part #	Description
<a href="#">20500</a>	Electronic Advance, Dual Fire
<a href="#">20550</a>	Electronic Advance, Single Fire
<a href="#">20100</a>	Mechanical Advance, Dual Fire
<a href="#">20200</a>	Mechanical Advance, Single Fire



### Single Fire Ignition System Kit

1970-1999 Carbureted Big Twin

1971-2001 XL \*Excluding S Models

Part #	Description
<a href="#">22001</a>	Kick Start Equipped
<a href="#">22003</a>	Electric Start Equipped
<a href="#">22005</a>	Racing Retarded Timing



### Universal Spark Plug Wires

Part #	Description
<a href="#">40100</a>	2-Wire Set w/ Single Plug Heads
<a href="#">40200</a>	4-Wire Set V-Twin w/ Dual Plug Heads



### Coil

1980-2002 Carbureted Big Twins

Part #	Description
<a href="#">30640</a>	Single Fire, 50,000 Volt
<a href="#">30650</a>	Dual Fire, 50,000 Volt





## COMPU-FIRE'S ROBUST CHARGING SYSTEMS

The Compu-Fire 40 amp 3Phase charging systems provide 25 amps at idle and 40 amps continuously above 2800 RPM. The unique narrow rotor and stator combination fits Softail/Dyna primary cases and the voltage regulator bolts on without any fram modifications. The precision balanced vented rotor keeps the stator cooler in closed primary systems to maintain maximum output under all high current draw conditions. The large flanged seal spacer provides maximum support for the rotor and the voltage regulator output is calibrated to 14.25 volts from idle on up.

### 40 Amp Charging System Kits for Harley-Davidson

Part #	Type	Description
<a href="#">55560</a>	40 Amp 3Phase	1881-99 Evo w/ Vented Rotor
<a href="#">55565</a>	40 Amp 3Phase	2003-06 Twin Cam* w/ Vented Rotor
<a href="#">55566</a>	40 Amp 3Phase	1999-02 Twin Cam w/ Vented Rotor
<a href="#">55570</a>	40 Amp 3Phase	1981-99 Evo w/ Non-Vented Rotor
<a href="#">55575</a>	40 Amp 3Phase	2003-06 Twin Cam* w/ Non-Vented Rotor
<a href="#">55576</a>	40 Amp 3Phase	1999-02 Twin Cam w/ Non-Vented

\*Except 2006 Dyna



#55560



#55520

### 32 Amp Charging System Kit

These 32 amp Compu-Fire charging systems include the three components necessary to keep the battery charged for carbureted Evolution and Twin Cam® engines. These systems include a custom wound stator with the correct engine case plug, a precision balanced rotor with the magnets permanently attached and splines machined to match factory or aftermarket sprocket shaft, and a black finned series type voltage regulator with the voltage output calibrated to meet maintenance free battery requirements.

- Part # [55520](#) 1981-99 Carb Evo w/ Narrow Rotor
- Part # [55522](#) 1998-03 Carb Twin Cam
- Part # [55540](#) 1981-99 EFI Evo & Big Twin



#55403

### Regulators

Part #	Amps	Finish	Description
<a href="#">55120</a>	32A	Black	1989-99 Big Twin
<a href="#">55130</a>	32A	Chrome	1989-99 Big Twin
<a href="#">55121</a>	22A	Black	1981-88 Big Twin
<a href="#">55125</a>	22A	Black	1991-99 Sportster
<a href="#">55150</a>	38A	Black	1998-02 Big Twin
<a href="#">55402</a>	40A	Black	Compu-Fire 3Phase
<a href="#">55403</a>	40A	Black	Universal 3Phase



#55404

### Stators

- Part # [55404](#) 3Phase Evo
- Part # [55405](#) 3Phase Twin Cam
- Part # [55530](#) 1981-99 Evo & Big Twin



#55406

### Rotors

- Part # [55406](#) 3Phase Vented Rotor
- Part # [55650](#) 3Phase Non-Vented Rotor
- Part # [55600](#) 1981-99 Evo w/ Narrow Rotor





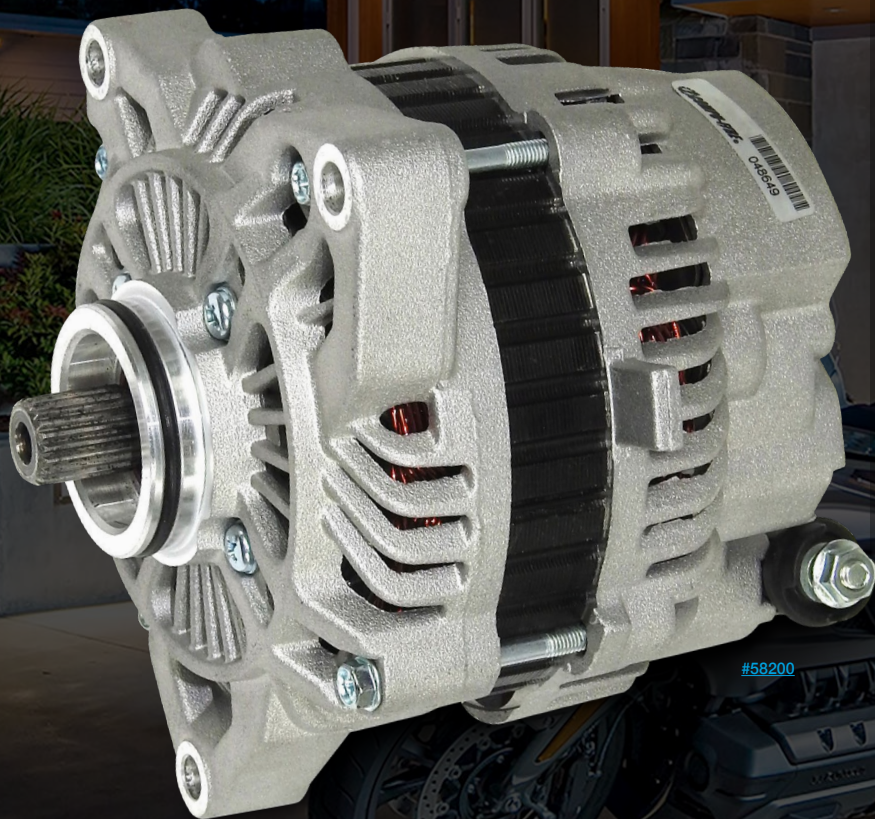
**PREMIUM GL**  
**HONDA ALTERNATOR**

Compu-Fire's 150 amp alternator is a high-output replacement for 78A (00-08 models) and 110A (09-12 models) Honda OEM alternators.

Our 90 amp alternator with 1325W of power cranks out 2.5 times the stock power for plenty of electricity to run all those accessories you need.

**HONDA Alternators**

Part#	Amps	Description
<a href="#">58200</a>	150 Amp	1999-17 Honda GL1800
<a href="#">58500</a>	90 Amp	1989-20 Honda GL1500



#58200

#58500





Compu-Fire® offers a full range of stock replacement Ignition Modules, Charging Systems, and Starters for both Volkswagen and Motorcycle applications.

We are renowned for robust performance and quality in longevity.

Find your part at: [PerTronixBrands.com](https://PerTronixBrands.com)

# BUGS BUSES & BIKES

**COMPU-FIRE®**

**VW & MOTORCYCLE PRODUCTS**

909-599-5955 | [PerTronixBrands.com](https://PerTronixBrands.com) | 440 E. Arrow Hwy • San Dimas, CA 91773